

ORIGINAL
SHREWSBURY



FREE

SHREWSBURY TOWN GUIDE 2019

DISCOVER
EAT
DRINK
STAY
ENJOY
SHOP
EXPLORE

originalshrewsbury.co.uk



Top - bottom:
 Bird's Nest, Market Hall,
 Canoeists on the River
 Severn,
 Theatre Severn,
 Wyle Cop,
 Sabrina Boat,
 School Gardens,
 Charles Darwin statue,
 War Memorial in
 Quarry Park.

WELCOME

Shrewsbury loves visitors and we hope the feeling is mutual. You can easily explore the town centre on foot, bike or boat and discover plenty along the way. It's not just a place full of flowers, medieval passages and café culture, Shrewsbury is packed with independent and national shops, restaurants and bars as well as must-visit international festivals.

This guide will help you to plan your visit. If you need more information call the Visitor Information Centre on 01743 258888.

YOU CAN'T COPY SHREWSBURY



Arrive	5
Discover	6
Eat	10
Drink	14
Shop	18
Events	23
Map	24
Explore	26
Do	30
Enjoy	34
Roam	36
48 Hours	40
Stay	42


ORIGINAL
SHREWSBURY


SHREWSBURY
TOURISM



 BLUEPRINT
TRAVEL MEDIA

Shropshire's Luxury Touring Caravan & Glamping Resort

Love2Stay is a purpose built Caravan & Motorhome Club Affiliated Site situated on the edge of Shrewsbury, Shropshire set in 22 acres of landscaped grounds close to the Welsh border.



122 fully serviced Super Pitches with fantastic views of the surrounding countryside. 11 luxury purpose designed Glamping Lodges with all the creature comforts of home!

**Taking
Bookings
Now!**

Super-fast WiFi, award-winning design toilet facilities and a park concierge service. Activity programmes for all the family from stargazing to den-building, an onsite pilates/yoga studio, gym and personal training.

Located just outside the beautiful market town of Shrewsbury within a stones throw of the Welsh borders and boasts fantastic views towards the Wrekin and the South Shropshire Hills.

- BIOTOP natural swimming pool
- Sun deck with coffee bar & pizzeria
- Evening movie cinedrome
- Children's play adventure zone
- Hot tubs
- Recreational fishing Lake
- Pilates & yoga studio
- Spa with treatment rooms
- Fitness suite
- Hot springs pool & giant beach

For more information:
www.love2stay.co.uk
Tel: 01743 583 124



LOVE2STAY

SHROPSHIRE'S LUXURY TOURING
CARAVAN AND GLAMPING RESORT



Shrewsbury railway station

There are many ways to get to Shrewsbury, from the Grade II listed railway station to Roman roads and bridges crossing Britain's longest river, the River Severn. Don't take our word for it though, come and see for yourself.

BY CAR

Shrewsbury is accessible via the A5 and M54. From Monday to Saturday there is a Park & Ride service directly into the town centre every 20 minutes from three car parks (see p47). You can travel for half price if you have an English bus pass.

There are a number of Pay & Display car parks in the town (see p47). Parking is free all day Sunday at Frankwell and Abbey Foregate car parks. Raven Meadows multi-storey car park is open 24/7.

If you're in a camper van, you can park at the Park & Ride sites and at Abbey Foregate car park.

BY TRAIN OR COACH

There are direct train services to and from Birmingham, Cardiff, Holyhead, London and Manchester. For more information call 08457 484950 or visit www.nationalrail.co.uk.

There are two daily National Express Coach services from London with connections from other towns on the network, all stopping in the town centre. For more information please call 08717 818178 or visit www.nationalexpress.com.

TAXIS

There is a taxi rank at the train station or you can phone:

ABC Cars	01743 545454
ShrewsburyTaxis	01743 242424
Go Carz	01743 441144

DISABLED ACCESS

There are designated spaces with time restrictions on Shoplatch, Castle Street, St. Mary's Street, Claremont Street, Princess Street, High Street and Roushill, but make sure your badge and clock are on display.

The car parks have disabled bays but you have to pay and please be aware that

your badge and clock must still be on display. All Park & Ride buses are wheelchair accessible and normal charges apply. For more advice call the Car Park Service Office on 01743 356628.

Raven Meadows car park runs a Shopmobility service. Electric scooters and wheelchairs are available for hire. Reservations are recommended. The service is available from Monday to Saturday, 9.30am - 4.30pm. Please call 01743 236900 for details.

IT'S A FACT...!

The largest operational mechanical signal box (in terms of levers) in Europe is Shrewsbury's Severn Bridge Junction - with 180 levers.



Find
The Perfect Gift
at The Soden Collection



The Soden Collection

Contemporary Art & Sculpture Gallery

The Soden Collection includes works by Salvador Dalí sketch & works on paper by Picasso, Pissarro, Lowry, Frost, Blow, Dali, Miro as well as contemporary work by some of the Europe's leading artists such as Endre Röder, Henrietta Dubray, George Morton-Clark, Mark Payne, Carl Payne & new collections from Carl Longworth & Rachel Talbot to name but a few...

80 Wyle Cop, Shrewsbury, SY1 1UT
01743 34 14 00 www.thesodencollection.com galler@thesodencollection.com

DISCOVER

There are more than 600 listed buildings within the river loop with architecture that's steeped in history. Traces of medieval life can be found throughout Shrewsbury's maze of narrow streets, each with an unusual name and a story to tell. Charles Darwin, our famous son, would still recognise many of his favourite haunts today.

MUSEUMS AND TOURS

One of the best places to start your journey is the Shrewsbury Museum and Art Gallery in The Square. It is based in the old Music Hall and includes the singular, medieval Vaughan's Mansion. The Museum tells the stories that make Shropshire unique through its' amazing galleries: Roman Gallery, Shropshire Gallery, Medieval, Tudor and Stuart Galleries and the Special Exhibition Gallery.

A recent addition to the town is the Soden Collection. The gallery is at 80 Wyle Cop and houses an ever-changing selection of contemporary art and sculptures.

A must-see is the converted prison, known locally as The Dana. Built in 1793, it closed in

2013 and now enjoys a second incarnation where you can sample 'life on the inside' with Jailhouse Tours.

Another unique way to experience Shrewsbury is on-board the Sabrina Boat as she gently sails around the river loop.

THE CASTLE AND ABBEY

Roger de Montgomery built both the Castle and the Abbey, just after the Norman Conquest of 1066. The stone castle you see today was rebuilt around one hundred years later but you can still see the mound where the original once stood.

Shrewsbury Abbey was also the setting of another famous monk, Ellis Peters' eponymous but fictional detective, Brother



01



02

01 Shrewsbury Abbey
02 Claremont Hill

DARWIN - OUR FAMOUS SON

Charles Darwin was born at Mount House in Shrewsbury on 12th February 1809 and spent the first 27 years of his life in the town. The **Darwin Town Trail** takes you to significant places around Shrewsbury that influenced the young Darwin. www.discoverdarwin.co.uk



Cadfael. You can follow a special Cadfael trail around the Abbey.

POETRY AND CHURCHES

Wilfred Owen, the Great War poet, was local to the area. He was killed in action just one week before the signing of the Armistice Treaty. Sadly, his mother was notified of his death as the local church bells were rung to celebrate the end of the war and today his memorial stands in the grounds of Shrewsbury Abbey.

In *A Shropshire Lad*, the poet A.E. Housman enthusiastically portrays the 'steeped crest' of the Shrewsbury skyline. Those steeples belong to the beautiful churches of St Mary's, St Chad's, St Julian's and St Alkmund's.

St Mary's lays claim to a 500-year-old medieval spire, one of the tallest in England. However, St Mary's prized treasure is the world-famous 14th-century Jesse stained glass window, which traces Christ's family tree all the way back to Jesse of Bethlehem, the father of King David.

The original St Chad's was founded in the 9th Century but the church you see today, with the largest circular knave in the country, was built in 1792. In the graveyard to the back of the church

is Ebenezer Scrooge's tombstone - a left over prop from *A Christmas Carol*, which was filmed in 1983, with many proud Salopians playing supporting roles.

At the top of Butcher Row, set in its own secluded square, is St Alkmund's, where it is possible to see a copy of Reni's *Assumption of the Virgin Mary* in the East window and lastly St Julian's with its 12th-century tower and its East Window in which is a reproduction of the famous painting, *The Transfiguration by Raphael*.

THE DRAPERS

The Drapers were the most powerful guild in medieval Shrewsbury. As their wealth grew they built many of the timbered mansions you see today, including Rowley's House and the Old Market Hall - possibly the only cinema in the country with a Tudor beamed ceiling and a medieval abacus on its outside walls.

THE MEDIEVAL STREETS

The narrow alleyways that interweave the town centre date from the 14th Century and are known locally as 'shuts'. Other street names reveal their past history: Gullet Passage, Carnarvon Lane and no prizes for guessing what used to go on in Grope Lane!

THE FIRST SKYSCRAPER IN THE WORLD

Built in 1797, the Ditherington Flax Mill is thought to be the world's oldest surviving metal-framed building and is currently undergoing major renovations. There are open days and tours and an exciting project to restore this historic site and secure its future.

THE BEGINNINGS OF ON THE ORIGIN OF SPECIES

In the 1800s Shrewsbury's inspiring surroundings roused the exceptionally inquisitive mind of Charles Darwin. He was educated at Shrewsbury School, describing it as having "too much Classics for his liking", but preferred to fish for newts in the River Severn, collecting insects and inspecting under rocks in The Dingle. Darwin went on to inspire the world with his thinking on evolution.

THE CHAPEL THAT ISN'T A CHAPEL

In Longden Coleham, there is what looks like a Victorian chapel. In fact, it's the Coleham Pumping Station, once the heart of Shrewsbury's sewer system with the buildings, boiler and two steam engines all listed by English Heritage. It was opened in 1901 and today it's a museum with open days throughout the year.




SHREWSBURY PRISON



*Walking
In the footsteps of history*

VISIT: WWW.JAILHOUSE TOURS.COM CALL: 01743 343 100

SHREWSBURY

VISITOR INFORMATION CENTRE

— AT THE MUSIC HALL —






Accommodation | Things to see & do | Guided walks | Guides, maps & brochures | Gifts & souvenirs | Boat tickets

Whether you're planning a trip, or already here and, tempted to find out more about Shrewsbury and Shropshire, you could do no better than to have a chat with the people at our Visitor Information Centre - after all they're the people in the know, you know.

Tel: 01743 258888 | Email: visitorinfo@shropshire.gov.uk | www.originalshrewsbury.co.uk



#LOCALLY SOURCED #GLOBALLY INSPIRED
SEASONAL FOOD AND DRINK

CSONS is a friendly cafe-restaurant in the heart of town serving breakfast, coffee, lunch, tea, cakes and dinner.

Our food is different; we use the best locally sourced produce and treat it with the respect it deserves by creating simple, unpretentious, globally inspired and exciting dishes that shout about the ingredients, reflect the seasons and are full of flavour.

Come and check us out, we're pretty confident you'll like what you find.

We'd also like to meet you!

BREAKFAST-LUNCH-DINNER
COFFEE-TEA-CAKES

8 Milk Street, Shrewsbury
SY1 1SZ Tel: 01743 272709
www.csons-shrewsbury.co.uk





EAT

Restaurants in rooms that predate the Wars of the Roses alongside independent and award-winning venues mean whatever you're into, you won't be short of something to satisfy your appetite.

TASTES OF THE WORLD

We have cuisine from many cultures: La Lanterna, Osteria da Paolo, Carluccio's, Zizzi, ASK and La Dolce Vita form part of a strong Italian contingent. Casa Naranja and AleOli offer tempting, authentic Spanish menus. However, you can head east to savour the spices of Thailand and India, or simply walk across the English bridge and try MoMo's Noodle Bar in Abbey Foregate, fly south to the Pacific with the House of the Rising Sun on Butcher Row or keep it British with fish and chips at The Drayton.

A MEAL TO REMEMBER

As well as being one of our finest restaurants, Draper's Hall is also one of our most historic buildings. Thick oak-panelled walls, flagstone floors and beamed ceilings all

conspire to make it a venue with a difference.

In the town centre is Darwin's Kitchen with its covered courtyard, The Hayward Restaurant at The Lion Hotel on Wyle Cop and the restaurant at The Lion & Pheasant Townhouse Hotel. These are some of our most historic hotels and combine history and elegance with fabulous dining.

SPOT OF LUNCH

In the indoor Market Hall, diners can enjoy an international menu including Spanish tapas, continental-style seafood, Chinese dumplings, Indian and Thai street food, vegan dishes and delicious cakes.

CSONS is a cafe-restaurant in the heart of Shrewsbury serving breakfast, coffee,

CSONS

What's the vibe?

Locally sourced produce and unpretentious, exciting dishes that are full of seasonal flavour.

What we liked:

The food is tempting to the eye and the palate with a welcoming, easy atmosphere to enjoy it in.

When?

Breakfast through to dinner plus cakes all day!



8 Milk Street,
01743 272709



-01



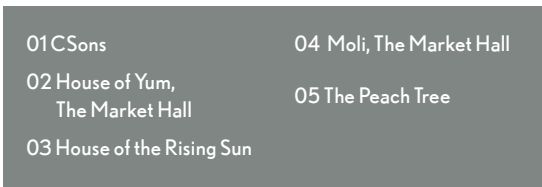
-04



-02



-05



-03

01 CSons

04 Moli, The Market Hall

02 House of Yum,
The Market Hall

05 The Peach Tree

03 House of the Rising Sun





lunch, tea, cakes and dinner. Their menu changes on an almost daily basis in response to what is available locally and is at its best. They serve simple, unpretentious dishes that shout about the ingredients, reflect the seasons and are full of flavour. Check them out, we're pretty confident you'll like what you find!

Number Four on Butcher Row offers everything from cakes and coffee to brunch, tapas and a delicious lunch menu. It opens in the evenings on Fridays and Saturdays, too.

In Victoria Quay you'll find The Armoury - an imposing, exposed brick and book-lined riverside gastropub offering stylish, eclectic, fresh food, cask ales and wine.

As the oldest public house in Shrewsbury, the Golden Cross Hotel, Princess Street, has an enviably long reputation for outstanding hospitality - coming up to 700 years! They serve real food with big flavours, simply prepared using the finest local and seasonal produce.

Don't forget that all the

independent cafés of the town not only serve wonderful coffee but you can grab a light bite in them. Some also offer evening events so check their websites or ask when you're there!

VEGAN AND VEGETARIAN

Vegetarians and vegans can eat well in most of the town's restaurants and cafés. However, there are a couple of gems, including The Bird's Nest in the Market Hall, The Good Life on Barracks Passage, Wyle Cop and Plant Kind on Milk Street. Prepare to have your taste buds amazed!

-01



-02



- 01 Ginger & Co
- 02 Gindifferent
- 03 The Pour House
- 04 The Peach Tree



-03



-04



Pubs with half-timbered ruins out back, live music, cocktails with a twist, independent coffee houses and more pubs per square metre than anywhere else in the world mean you will not go thirsty!

Café Culture - Shrewsbury Style

Shrewsbury certainly has its pick of fabulous cafes and baristas with a passion for their art. Alongside the big international chains are quirky one-off independent cafés. Ginger & Co. Coffee in The Square offers amazing coffee and delicious cakes in an original setting and across in Frankwell is The Pour House serving fresh coffee, impressive milkshakes and delicious cocktails if you're ready for something stronger!

Stop. café is situated inside the Museum and Art Gallery building and also next to Greyfriars Bridge. Across the bridge is HOUSE coffee, serving light bites, cakes and amazing coffee - an ideal place to grab a takeaway drink before enjoying a stroll around the Quarry Park.

Inside St Mary's Church, the national-award-winning Battlefield 1403 Farm Shop has a small café in a stunning setting. In the Market Hall, the award-winning Bird's Nest is considered one of the 'coolest' places in town for coffee, cake and healthy street food lunches. Its name comes from the canopy of woven willow branches that crown its surf shack style seating area.

If tea is your tippie you won't go far wrong with a visit to The Gallery Tearooms, off The Square, or Camellias Tea Rooms towards the end of Butcher Row in St Alkmund's Place.

A Real Ale Trail

Locally, the Salopian Brewery has won awards for its real ale, with its famous 'Shropshire Gold' - something of a local legend and served in many

HOUSE COFFEE

What's the vibe?

Coffee lovers and tea-goers equally welcome in a friendly, up-cycled atmosphere.

What we liked:

The cakes are a local legend and the brunch menu is delicious. There'll be something for you.

When?

9am - 4pm



120 Longden Coleham



Welcome to Shrewsbury's premier Champagne bar inspired by Alice's Adventures in Wonderland. Pop into the award-winning renovation of one of the most iconic buildings in Shrewsbury for a glass of Champagne, Prosecco or an Alice in Wonderland enthused cocktail, as well as platters for sharing and let us know in advance if you would like to book a Mad Hatter's Afternoon Tea!



15-16 Mardol, Shrewsbury, SY1 1PY
01743 364198 | enquiries@tenandsixbar.co.uk

Ginger & Co. Coffee

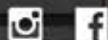
Princess Street, Shrewsbury
(Back of the Square)



☕ Speciality Coffee ☕ Loose Leaf Teas ☕ Independent
☕ Fresh Light Lunches ☕ Homemade Cakes ☕ Takeaway
☕ Princess Street ☕ Locally Sourced ☕ Seasonal Food
f gingerandcocooffee @ginger_and_co_coffee



120 Longden Coleham, Shrewsbury SY3 7DU



of the pubs and bars in town. The Battlefield Brewery opened in 2016 and you'll find their ales across the town or alternatively you could try one of their fully guided tours.

If you like to sample local beers and ciders, we have over 60 pubs where you can take a sip and enjoy the CAMRA trail. The King's Head on Mardol, with its medieval wall paintings and the Nag's Head on Wyle Cop, with the remains of a medieval mansion in its beer garden are two of the more unusual hosteleries.

ABIT OF ALL SORTS

If you're looking for cocktails Havana Republic, The Pour House, The Libertine, Blind Tiger, The Loopy Shrew and The ALB play host to some of the best mixologists in the business.

The House of Grain, at the bottom of Wyle Cop, stock an ever-changing range of crafts ales, an impressive list of gins and have a funky,

welcoming vibe that is worth experiencing.

Ten & Six is a recent addition to the town and Shrewsbury's premier champagne bar. It is located in Mardol in one of our most iconic buildings.

Another don't-miss venue is the Lion and Pheasant Townhouse. They offer a fabulous afternoon tea plus a wide selection of local ales, wines, cocktails and gins. The bar's oak floors and quirky furniture, create the perfect atmosphere.

Just across the English Bridge, nestled alongside The Abbey, The Peach Tree is the perfect destination for everything from morning coffee & cake to cocktails & dancing.

Finally, don't forget to visit The Boathouse. With a beer garden alongside the river and overlooking the Quarry Park it's the perfect place to while away a few hours.

Whatever you're looking for, Shrewsbury will have it.



-01



-02



-03

01 The Bird's Nest

02 House of Grain

03 The Libertine

Shop all your favourite brands.

Shrewsbury STYLE

**Darwin & Pride Hill
Shopping Centres**
Shrewsbury

📶 🐦 📘
shrewsbury-shopping.co.uk

H&M

M&S

PRIMARK®

The **Entertainer**
TheToyShop.com

next

LAURA ASHLEY

Clarks



Located at the top of Wyle Cop, you will find Marianne Exclusive Fashions. A family owned and managed business with an independent spirit, Marianne fashions have been trading since 1985.

4-5 Wyle Cop,
Shrewsbury SY1 1UT

www.marianneexclusivefashions.co.uk



THE **PARADE**
SHOPPING CENTRE

St Mary's Place, Shrewsbury SY1 1DL

Fashion | Bridal
Collectables | Gifts
Creativity | Pampering
Cafe | Food

www.paradeshops.co.uk

SHOP

Shrewsbury is one of the few places in the UK where independent shops outnumber the big chains. There are endless boutiques and quirky independents, all tucked away in 'shuts and passages' (those crooked medieval alleyways that criss-cross the town centre).

THE UNCONVENTIONAL

Throughout the town there are one-off boutiques and quirky independents to entice the shopper.

Take a stroll along the longest row of uninterrupted independent shops in Britain on the medieval Wyle Cop.

The Parade, a Grade II listed building, with its grand neo-classical exterior and quaint Victorian interior, has 30 independent shops from tailors and cobblers to artists and jewellers. These places are made for lingering, browsing and finding that gem that no one else has.

On Roushill Bank you'll find the Sabrina Boat Booking Office

where you can pick up a map or a postcard, hire a bike or book a Sabrina Boat ticket. This is also the place for 'All Things Darwin'. Learn about his history or pick up a copy of *On the Origin of Species*.

Meander the Market Hall, home to some 70 independent, quirky and creative businesses - from swish home and gift boutiques to art and craft studios, vintage and a cosy pre-loved bookshop.

MODERN NAMES

The Pride Hill Centre, the Darwin Centre and the Riverside contain a mix of the familiar and the fashionable. The Pride Hill and Darwin Centres are located in the



Romy Design,
The Market Hall

E & J Jewellers

Incorporating Jewellery Workshop

Some alterations & repairs
can be done same day

01743 365957



Designer Lingerie,
sleepwear and
resort wear all year round.

Cooking Kneads

Shrewsbury's Independent Cookshop

A haven for chefs and keen cooks

Great gift ideas

Emma Bridgewater stockists

T: 01743 368199

SHOP WYLE COP

THE LONGEST RUN OF INDEPENDENT TRADERS IN THE COUNTRY



OVERON

Oberon of Shrewsbury offers unique styling in
ladies clothing, jewellery and footwear.



Hair: Your Way, Any Way
34 Wyle Cop, Shrewsbury, SY1 1XB
01743 238345



Vinterior

- For something a little different •
- Quirky, Quality Gifts & Interiors •



Teestar Ltd

Quality branded ladies and gents
footwear especially chosen
for style and comfort.

Stockists of
Rieker & Josef Seibel.



Purveyors of fine Single Malt Scotch Whiskies as well
as stockists of select Artisan Gins & other tipples.

only pedestrianised part of the town centre: Pride Hill.

FAMILY SECRETS

Many of Shrewsbury's most famous shops have been in the same hands, on the same site, for generations. The great-great-Uncle of Tanners Wines current owner started the business and even today, their shop on Wyle Cop looks much the same as it did in 1842. The cellars doubled as Fezziwig's warehouse in the film *A Christmas Carol*.

A LOCAL DELICACY

Shrewsbury is blessed with wonderful markets selling a variety of fresh produce. Its main market, housed within the Market Hall at the foot of the town's iconic clock tower, is today described as Shropshire's answer to Camden Market. The Market Hall is home to local artisan producers, vintage sellers and a host of quality handcraft and gift stalls who stand alongside butchers and traditional stalls selling fresh produce. The market also has innovative street food cafés which are well worth a visit. It opens every Tuesday, Wednesday, Friday and Saturday with a selection of stalls open on a Thursday.

On the first Friday of the month a farmers' market in The Square pops up, with around 30 producers offering fresh local meats, cheeses, fruit and vegetables from all over Shropshire. Much of the local produce is supplied to restaurants in the area and served by the award-winning chefs in the region.

At the top of Wyle Cop you

will find Appleyards Deli, a stalwart of the town where some of the best gourmet foods from around the UK and the Continent are on offer.

HEALTH AND BEAUTY

Treat yourself to a pamper at one of our independent salons. Hair and Beauty by Mr David is located in The Square and has an unusual feature of a grand piano in the salon! The Parlour on Hills Lane offers hair and beauty treatments in a fabulous wonky-floored building and at Tootsies on Dogpole you can have a manicure and watch the world go by. You can pick up health and beauty products in independent businesses and national names.

FAIR TRADE

Shrewsbury is an official Fairtrade Town. You'll find plenty of Fairtrade products in our shops, cafés and restaurants, as well as a shop on St. John's Hill. The Market Hall has a dedicated Fairtrade stall and its Snapdragon Wholefoods also specialises in organic and Fairtrade products.



01 Sabrina Boat booking office & gifts

02 Shoplatch





4th - 5th Oct '19

Real Ales, Gin Den, Cocktails,
Comedy, Live Music & Street Food
shropshireoktoberfest.co.uk



11th - 12th May '19

Epic family fun for 1-14 year olds,
inflatables, sport, crafts & more!

shropshirekidsfestival.co.uk



29th - 30th June '19

200+ Food, Drink & Craft Exhibitors,
Demo's, Chef School & Live Music
shrewsburyfoodfestival.co.uk



**COMING TO THE SHREWSBURY QUARRY PARK IN 2019
THREE AMAZING FESTIVALS.**



So much more than a Flower Show!

Attractions for all ages including stunning floral arrangements, equestrian competitions, exciting arena entertainment for all the family, food, crafts & trade stands, advice from celebrity gardeners and cookery demonstrations by TV chefs; all topped off with world class fireworks.



**Celebrity Chef
John Torode**



**Shrewsbury
Flower Show**

Friday 9th & Saturday 10th August 2019

**Kids go
FREE**



**Call 01743 234058 or visit
www.shrewsburyflowershow.org.uk**

**2020 Show dates
14th & 15th August 2020**

EVENTS

Please note that dates are subject to change, and are correct at time of going to print. We advise checking before travelling.



Fireworks, air shows and regattas. Food festivals, book festivals, music festivals, science festivals and a festival for the kids!

DARWIN SHREWSBURY

Feb 8 - 24

[originalshrewsbury.co.uk/
darwin-shrewsbury-festival](http://originalshrewsbury.co.uk/darwin-shrewsbury-festival)

Big Busk

Apr 6

thebigbusk.co.uk

Cartoon Festival

Apr 27

shrewsburycartoonfestival.com

Shropshire Kids Festival

May 11 - 12

shropshirekidsfest.co.uk

Shrewsbury Children's Bookfest

shrewsburybookfest.co.uk

Shrewsbury Regatta

May

pengwernbc.co.uk

Shropshire County Agricultural Show

May 25

shropshirecountyshow.com

River Festival

Jun 2

shrewsburyriverfestival.com

Shrewsbury Carnival

Jun 15

shrewsburycarnival.co.uk

Food Festival

Jun 29 - 30

shrewsburyfoodfestival.co.uk

Let's Rock

Jul 13

[festicket.com/festivals/lets-
rock-shrewsbury/2019/](http://festicket.com/festivals/lets-rock-shrewsbury/2019/)

Flower Show

Aug 9 - 10

shrewsburyflowershow.org.uk

Shrewsbury Folk Festival

Aug 23 - 26

shrewsburyfolkfestival.co.uk

Steam Rally

Aug 25 - 26

shrewsburysteamrally.co.uk

Oktoberfest

Oct 4 - 5

shropshireoktoberfest.co.uk

West Mid Bonfire and Fireworks Extravaganza

Nov (tbc)

shropshirecountyshow.com

**For more events & information
about visiting Shrewsbury
contact:**

Visitor Information Centre

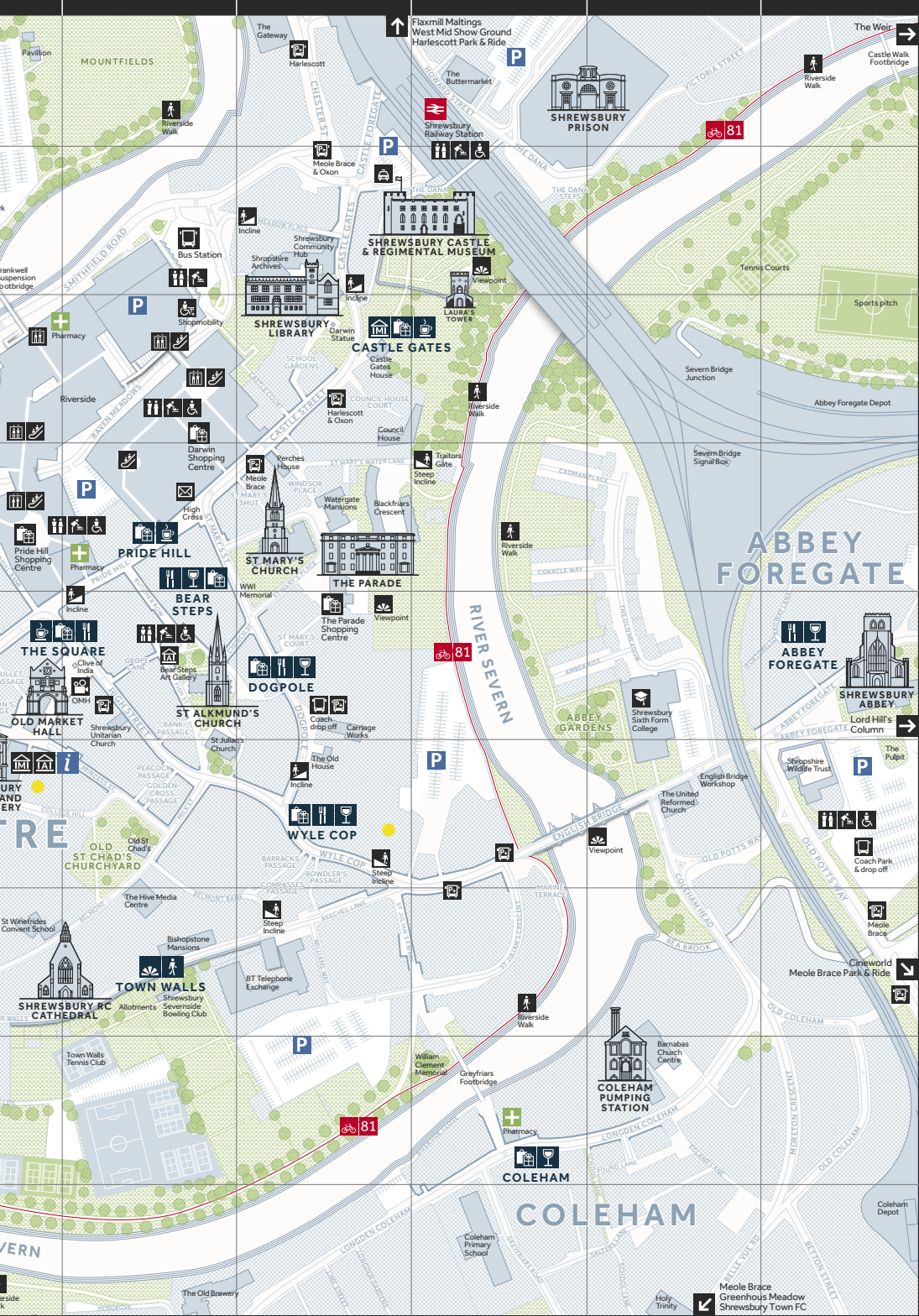
T: 01743 258888

E: visitorinfo@shropshire.gov.uk

W: originalshrewsbury.co.uk



[illegible]



Boat Trips

- 45 minute trip around the River Severn loop
- Six trips on the hour | 11am - 4pm
- Every day March - October

Live commentary,
refreshments &
table service

Discounts for
concessions,
families & children

Pre-book or buy
tickets on board

A unique
way to see
Shrewsbury



Boat Address
Welsh Bridge,
Shrewsbury. SY1 1HH
01743 369 741
www.sabrinaboat.co.uk



the allotment
PRODUCE MARKET

1 Greyfriars Bridge, Longden Coleham SY3 7DS



SHREWSBURY CATHEDRAL



Shrewsbury Cathedral, built by the Earls of Shrewsbury, designed by A. W. Pugin, is one of Shrewsbury's Great Treasures and is perched on the Medieval Town Walls of Shrewsbury. The Cathedral, the Orchard Cafe & Bookshop welcomes visitors and pilgrims alike.

For information: Cathedral Office: 12 Belmont, Shrewsbury SY11TE

www.orchardshrew.co.uk 01743 290 000 shrewsburycathedral.org

EXPLORE

The River Severn forms an almost perfect loop around the town with the Castle built at its only opening, forming a moat, designed and built by nature. You can walk the loop or, alternatively, take it all in on board the Sabrina Boat.

THE RIVER

Enjoy the beautiful River Severn aboard the aptly named Sabrina Boat, Shrewsbury's only passenger boat. You can join one of their trips which run on the hour from 11am through to 4pm with full refreshments available on board.

The towpath along the bank passes through the heart of the town. When you're ready for a rest, you can call in at one of the many pubs/inns that overlook the river for refreshments or pack a picnic and choose your spot - there's plenty of space!

THE BRIDGES

The English Bridge and Welsh Bridge sit on opposite sides of the town and are the main thoroughfares into the town centre. They were both built

in the 18th Century but there have been bridges on site since Norman times. The English Bridge is to the east of the town and the Welsh bridge to the west. The eagle-eyed will also notice that the English Bridge has seven arches and the Welsh has five - an arch for each letter in their name. Among some of our other bridges are The Porthill Bridge which connects Porthill with the Quarry Park and the town centre. The 10ft wide suspension bridge also experiences significant vibration, even when only a few people are crossing it, which is quite an experience! Kingsland Bridge was constructed by the Cleveland Bridge & Engineering Company, who also built the Victoria Falls Bridge. It is known locally as the Penny Bridge. Built

SABRINA BOAT

What's this?

Shrewsbury's only river cruise.

What we liked:

The beautiful views, fun and informative commentary, friendly staff and wide variety of drinks delivered to our table!

When?

6 trips a day 11am – 4pm on the hour, 7 days a week from 1st March to 31st October.



*Victoria Quay,
Next to the Welsh Bridge*



- 01 Sabrina Boat
- 02 Market Hall clock tower
- 03 The Quarry Park
- 04 St Chad's Church
- 05 Pride Hill
- 06 St Alkmund's Square



in 1880, Greyfriar's Bridge replaced a ferry boat crossing between St Julian's Friars and Coleham, relieving some of the congestion on the narrow footpaths of the English Bridge.

TOWN WALLS

The Town Walls that once protected the citizens from hostile neighbours can still be seen today as can the one remaining 14th-century watchtower. Town Walls Tower formed a key part of the defensive walls that once surrounded the town and is now the last surviving example of those defences. On just six days a year the National Trust, who care for the property, run open days for visitors to explore this fascinating piece of the town's history.

Further along Town Walls you will find the impressive Shrewsbury RC Cathedral with its Pugisn designed stained-glass windows.

SHREWSBURY'S BURNING

On many of the older buildings in the town centre you will see a variety of metal plaques on the walls. Known as 'Fire Insurance Plaques', they are the emblems of local insurance companies that acted as a guide to the fire companies. Each fire brigade was employed directly by an insurance company and would only attend buildings under the wing of their insurance provider. If you had insurance with another company, you needed to negotiate with whoever turned up first!

WHAT DO YOU KNOW?

The Public Library is housed in a Grade 1 listed building situated on Castle Gates. Until 1882 it was the main building for Shrewsbury School, where Charles Darwin was a pupil. Can you find schoolboy graffiti from that time?

GHOST TOURS

As a medieval market town, Shrewsbury is reputed to be one of the most haunted towns in the UK. With narrow passages looming over you in the dark, a spooky boat tour (October only), a ghastly prison and haunted buildings, don't miss an eerie ghost tour.

Walking tours usually take place every Thursday night in October and November with extra dates around Halloween itself. Booking is essential. Call the Visitor Information Centre on 01743 258888 for full details.

There are also tours of the old Shrewsbury Prison at night - the world's only opportunity to experience a prison officer's life at night. This event gives you a real insight into the nightlife of a 200-year-old prison.

TUESDAY EVENING CRUISE

Jump on board Sabrina Boat and enjoy a glass of prosecco every Tuesday evening at 7pm for a gentle 45-minute cruise down the River Severn. Why not include a meal at a local restaurant with their meal & cruise packages available to be pre-booked from their website, phone or booking office.

WE'RE DOG-FRIENDLY

Dogs are made welcome in Shrewsbury including in many of our pubs, cafes, restaurants, shops and hotels. We also have the 29-acre Quarry Park which is ideal to burn off all of that energy. Remember dogs are welcome on board any of our local buses.





ABAKHAN

FABRICS | HOBBY | HOME



FABRICS 🧵 CRAFTS 🧵 HABERDASHERY 🧵 YARNS 🧵 AND MORE!



SEWING & CRAFT CLASSES
WE MAKE CURTAINS & BLINDS IN 7 DAYS



01743 353412 | 18 MARKET STREET, SHREWSBURY, SY11LE | OPEN 7 DAYS



DO

Shrewsbury is the town with something for everyone - whether it's a guided tour, a glass of wine in the Old Market Hall, a world-famous comedian or a nationally renowned hit play at Theatre Severn.

BATTLES, FALCONS AND FINE FOOD

Battlefield Falconry Centre, located near the site of the Battle of Shrewsbury, is where you can book a special Bird of Prey Experience and spend time handling the enigmatic birds under the guidance of one of their handlers.

It shares the site with the Battlefield 1403 Visitor Centre hosting one of the best butcheries in the UK, a well-stocked deli counter, a shop full of specialty local goodies and a museum celebrating the Battle of Shrewsbury.

THEATRE AND CINEMA

Boasting a stunning riverside location, Theatre Severn was opened in 2009. Many famous names have spounded the boards and all ages are welcome. Comedian

Jason Manford described it as "easily one of the top five theatres in the country" and we don't think he was joking!

Originally built in 1596, the Old Market Hall was once a reflection of the town's prosperity. Converted as late as the 1870s into offices and a courthouse, it was re-opened in 2004 as a cinema with a unique atmosphere and is the perfect place to enjoy a glass of wine while watching a film.

Built in 1863 as a Temperance Hall with a rich and varied past and an equally exciting future is The Wightman Theatre. Located off The Square it hosts music gigs, art exhibitions and theatre events as well as the occasional pop-up market or fair.

FLY AWAY

Usually launching from the north of Shrewsbury, Virgin

Balloons can take you over the town. From up above you can see the medieval street plan, the loop of the River Severn, Shrewsbury Castle and Shrewsbury Abbey. You'll then head across the countryside where scenic views of the Wrekin and the beautiful South Shropshire Hills await you.

DISCOVERING DARWIN

Shropshire Wildlife Trust own the gardens that belonged to Charles Darwin's family. You can book an hour to walk along the 'thinking path' where the ideas for his Theory of Evolution germinated. The Sabrina Boat also offers a Charles Darwin Cruise with commentary about Darwin's life in Shrewsbury, as well as tea/coffee and biscuits. Groups should be pre-booked. You can also tread in Darwin's footsteps

by following the Darwin Town Trail, more information on which can be found at www.discoverdarwin.co.uk. There's also the **DARWIN SHREWSBURY** Festival from 8th-24th February, when more the 30 events will celebrate our intrinsic links to Darwin with a festival encouraging the curiosity and independent thinking evident in the work of Darwin.

STUCK BETWEEN A ROCK AND A HARD PLACE

The Quarry Park, a former stone quarry but now a picturesque park, is ideal for a picnic. Its crowning jewel is the beautiful sunken garden, landscaped with alpine borders, colourful bedding plants and water features - The Dingle - a floral masterpiece redesigned by world renowned gardener, Percy Thrower.

The Quarry Park's iconic landmarks include The Bandstand, built in 1879; the Harley Stone, said to be the anchor stone of the last surviving allotment where livestock was tethered on a leash of no more than 16 yards; and Shrewsbury's main civic war memorial near the St Chad's entrance. There is also the impressive statue of the heroic Hercules standing proudly on the riverbank. Even he can get very wet when the river rises!

Sabrina, the statue of the Goddess of the Severn, can be found in The Dingle. 'Severn' and 'Sabrina' are English and Roman versions of the same word. According to the myth, she was an



innocent girl who was drowned in the river by her father's first wife after he was unfaithful.

SEWING AND CRAFT WORKSHOPS

Abakhan Fabrics, Hobby & Home have been teaching Sewing & Craft Classes for 10 years and have launched a brand new Workshop

on Market Street. Located within Abakhan's new store beside Shrewsbury Market at the foot of Pride Hill. Pop in to see what's on and pick up a Sewing & Class Brochure in-store or book online at www.abakhan.co.uk.

FAMILY FUN

Shrewsbury is a town with something for everyone,

and that makes it the perfect destination for families. Whatever you're looking for, there's plenty of opportunity for fun whatever you age.

Shrewsbury Museum & Art Gallery's learning and education programme offers something for all ages. Look out for the Heyday Art workshops - inspiring art events for children aged from 6 months to 10 years.

In the novel setting of Shrewsbury's old jail, you will find a children's play centre with plenty to keep kids occupied. For the adults there is a great range of hot drinks, food & plenty of seating.

Button and Bear Bookshop is the first Children's Bookshop in Shropshire, with books suitable from birth right up to the end of primary school, and is based on Castle Street. It's just along from Shrewsbury Castle which is worth a look for the history and architecture plus a picnic in the castle grounds is a perfect way to spend your lunchtime!

Splat n Splodge is the town's one and only pottery painting studio. Located in the Parade Shopping Centre, it can seat 32 people and stocks over 100 different pieces of pottery.

Connecting children with nature is essential to Shropshire Wildlife Trust's vision of creating a living landscape and living seas. The trust helps to preserve the local environment and cares for 38 local nature reserves.

The purpose built climbing centre at Climbing The Walls caters for all ages and abilities.

The centre also includes a café, shower facilities, function rooms and classes.

Taking place in the Quarry Park, Kids Fest offers the sort of fun which keeps you laughing and smiling

for weeks and months afterwards. There is just about everything any kid aged 0-14 could possibly want. Don't forget the Children's Book Festival too - a jam-packed annual event.



- 01 Dingle Gardens
- 02 The Old Market Hall
- 03 Sabrina Boat
- 04 Shrewsbury Kids Fest
- 05 Theatre Severn

ENJOY

There's plenty of live music and a variety of festivals on offer for you to enjoy. There are formal venues like Theatre Severn, informal bar venues such as The Loopy Shrew, Darwin's Kitchen or Albert's Shed and larger nightclub venues such as The Buttermarket and Havana Republic.

The events and festival scene provides vibrant entertainment all year round. Shrewsbury hosts a wide range of events throughout the year, including the Shrewsbury Food Festival, Oktoberfest, Shrewsbury Flower Show, Shrewsbury Folk Festival Children's Book Fest and the International Cartoon Festival.

Even though Shrewsbury's Summer Season first started in the 1700s, our modern version now brings together a celebration of theatre with live music ranging from opera to jazz together with plenty of family activities and fun workshops.

FLOWERS WITH FIREWORKS

Since 1857, the celebrated Shrewsbury Flower Show

has attracted visitors from all over the world. Whilst the flowers are the undisputed stars of the show, they're not the only draw. There's music from military bands and choirs, premier show jumping, a dedicated children's area, buzzing trade marquees including a food hall, together with a celebrity guest or two – so you don't have to have green fingers



to enjoy the event. In the evening the attention moves to the arena, where there is a concert both nights, followed by the massed band finale and finally the show closes with a stunning Firework displays.

Shrewsbury Flower Show is one of the country's premier events, attracting top exhibitors from all over the country, fantastic floral displays, horticultural competitions, high quality trade stands and great food is to be expected. Music fills the air as choirs and bands perform throughout the day on the bandstand, whilst the arena offers a variety of entertainment to suit every taste. For information visit shrewsburyflowershow.org.uk.

DARWIN'S BIRTHDAY

Every February, to mark Charles Darwin's birthday (12th Feb), we celebrate our most famous former resident with lectures, walks and activities to inspire the next generation. There's even an annual race in his honour with a Darwin-inspired medal for all competitors.

GET SKETCHED

In April, cartoonists from all over the world come for the Shrewsbury International Cartoon Festival – the only one of its kind in the UK. They fill The Square with giant cartoons and you can often get your own caricature done for free as long as you've got a reasonably thick skin!

A RURAL COUNTY

The Shropshire County Show also in May is a celebration of the rural community and the role it plays in our daily lives. With the finest animals being displayed alongside entertaining shows and events this has been a well-established event of over 140 years in the town's diary.

FOOD AND DRINK!

Shrewsbury Food Festival, in June, is something a bit different. Over 200 of the county's best artisan producers set up shop in the Quarry Park where top chefs are on hand to impart some of their culinary whizz. A live music stage and a host of activities makes this festival one of the best in the UK.

Shropshire Oktoberfest is the newest festival on the block with over 150 real ales, live music, comedy and street food, served alongside a farmers' market, gin den, rum shack and prosecco parlour. Held in October in the Quarry Park, it's sure to become a regular on the festival calendar.

KIDS FESTIVAL

Kids just wanna have fun - and we serve it up right across a fabulous weekend. We've got the the foamiest foam parties, a mega sports zone, massive inflatables, a have-a-go music tent, zorbs, balls, go karts, a circus tent, craft activities and just about anything else any kid aged 0-14 could possibly want.

FOLKIE FUN

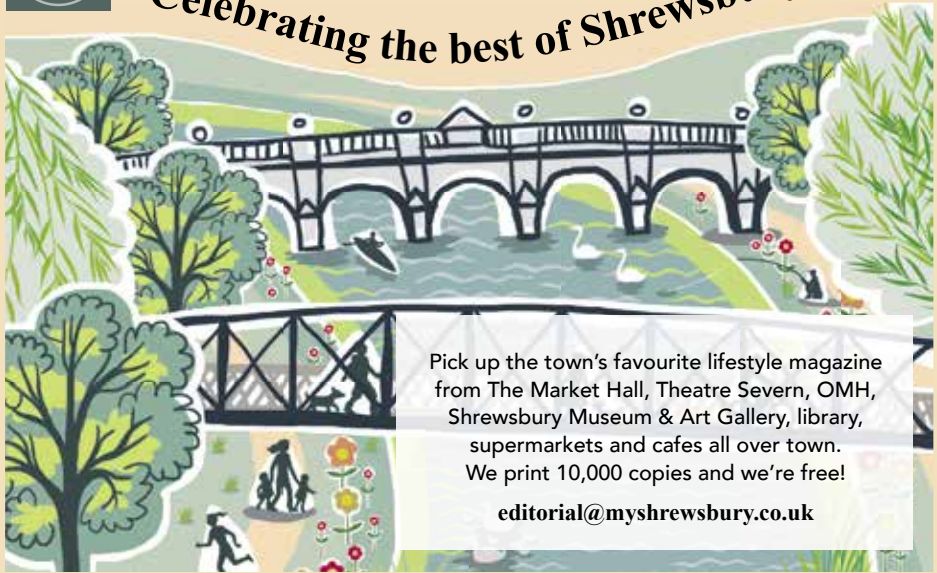
Shrewsbury Folk Festival is like no other. A music festival where you can park right next to your tent or caravan, hop on a bus into town, enjoy proper showers and toilets, use as much free WiFi as you want, safely take the children and see world famous musicians in an incredibly laid back style. Sounds good? They also ask the question, is it a music festival with beer or a beer festival with music?



01 Shrewsbury Flower Show
02 Shrewsbury Food Festival
03 Shrewsbury Folk Festival



Celebrating the best of Shrewsbury



Pick up the town's favourite lifestyle magazine from The Market Hall, Theatre Severn, OMH, Shrewsbury Museum & Art Gallery, library, supermarkets and cafes all over town. We print 10,000 copies and we're free!

editorial@myshrewsbury.co.uk



**THE NEAREST OF THE GREAT
LITTLE TRAINS OF WALES TO
ENGLAND
ONLY 25 MINUTES FROM
SHREWSBURY**

01938 810441

**info@wllr.org.uk www.wllr.org.uk
WELSHPOOL, RAVEN SQ. STATION
SY21 7LT**



IRONBRIDGE.ORG.UK

**WHERE WILL
YOUR VISIT
TAKE YOU?**

FROM:

HORSE POWER!

**At Blists Hill
Victorian Town**

**10 AWARD WINNING
ATTRACTIONS
IN A WORLD
HERITAGE SITE**

THE POWER OF WONDER!

At Enginuity

TO:

ROAM

Shrewsbury is a fantastic base from which to explore the surrounding area. There are two World Heritage Sites, a Roman city, Britain's first legally constituted Parliament and the outstanding natural beauty of the magnificent Shropshire Hills.

WROXETER ROMAN CITY

2000 years ago, Viriconium was the fourth largest city in Roman Britain – they built roads that led here which still exist today. The excavation of the second century baths

began in 1859, making it one of the first archaeological sites to open to the public in the United Kingdom. One of the on-site highlights, complete with frescoes and mosaics, is the reconstruction of a

Roman town house built for the TV documentary, *Rome Wasn't Built in a Day*, as a joint effort by English Heritage and Channel 4.

WORLD HERITAGE SITES

Firstly, there is the Ironbridge Gorge, home to the Industrial Revolution and the world's first iron bridge with ten different museums spread along the valley of the River Severn.

Secondly, there is the Pontcysyllte Aqueduct and Canal which was built by Thomas Telford and William Jessop. Completed in 1805, it is the longest (307m) and highest (38m) aqueduct in Britain. It is often called 'the stream in the sky'.



Wroxeter Roman City



-01



-02

- 01 Cardingmill Valley
- 02 RAF Cosford
- 03 Blist's Hill Victorian Town

GRAND HOUSES AND GARDENS

With its own deer park, Attingham Park is an 18th-century mansion, built by the first Lord Berwick in 1785. As their family fortunes rose and fell, the Berwicks went from being spenders, to savers, to saviours.

Hawkstone Park & Follies, just north of Shrewsbury, is a fantasy land of cliffs, crags, caves and monuments built over 200 years ago.

THE HILLS ARE ALIVE!

The Shropshire Hills have been long designated as an Area of Outstanding Natural Beauty. Walk for miles across hills that include the Long Mynd, Stiperstones, Wenlock Edge and Cardingmill Valley, all of which have breathtaking views.

PEDAL POWER

Road and mountain bikers are in their element with the rolling hills and easy commutes to some of the country's best cycling. Just 40 minutes from Coed Llandegla and with The Long Mynd, The Wrekin, Hopton Woods and Eastridge on the doorstep, adrenalin pumping downhill runs or sedate rides are just a quick pedal from Shrewsbury.

MUCH WENLOCK

Much Wenlock is a small and picturesque town situated on the A458 road between Shrewsbury and Bridgnorth. It is worth a visit in its own right but its claim to fame is The Wenlock Olympic Games established by Dr William Brookes in 1850 and credited as a founding father of the modern Olympic Games. One

of the mascots for the London 2012 Olympics was named Wenlock after the town.

UP, UP AND AWAY!

The RAF Museum Cosford offers an entertaining day out for everyone with more than seventy aircraft of international importance housed in three Wartime Hangars, including the world's oldest Spitfire and a Lincoln Bomber. With a train station just a few minutes' walk away from the Museum site along with free entry, it is a fantastic day out.

ELLESMERE LAKES

Shropshire's Lake District is noted for its wildfowl, gardens, picnic areas, rowing boats, playground, visitor centre and woodland walks. The centre also features a natural history exhibition and telescopes where resting herons can be viewed between the months of April and early May.

CHILDREN AND FAMILIES

Shrewsbury and the surrounding areas also have much to entertain families. There are friendly farms that appeal to all ages and offer close contact with over 120 different animal species at Hoo Farm Animal Kingdom, Park Hall Countryside Experience and Ray's Farm, all within a short drive from Shrewsbury.

The Shropshire Hills Discovery Centre in Craven Arms boasts a mammoth, a virtual hot-air balloon ride and a 30-acre meadow to explore. There are special events and an award-winning café, so make sure you

don't miss it!

JUST ACROSS THE BORDER

Just a short drive from Shrewsbury is Coed-y-Dinas, an independent, family-run shopping outlet. With a range of items from plants to kitchen equipment, toys to camping gear and a spacious restaurant where freshly prepared, locally sourced food is served, it's certainly worth a visit.

With over seven acres of hands-on displays and gardens and with over 40 years of experience in sustainability practice, the Centre for Alternative Technology (CAT) inspires thousands of visitors every year. Based in beautiful Mid Wales, the Centre overlooks the Snowdonia National Park.

All of these, and more, are great places to explore while using Shrewsbury as a base.

HAWKSTONE PARK & FOLLIES

Tell me about it!

An historic woodland fantasy with cliffs, crags, caves, deep woods and a series of extraordinary monuments built over 200 years ago.

What we liked:

Great walks and spectacular views. Suitable for all the family though not 'wheel' friendly.



Weston-under-Redcastle
SY4 5JY



48 HOURS IN SHREWSBURY

Shrewsbury boasts hundreds of years of history coupled with a vibrant, contemporary atmosphere. Take a weekend break to explore some of what we offer - both old and new.



A Short Break

Day 1

Morning - A great starting point to discover the town and gather your bearings is **The Square**. Behind the **Old Market Hall** you'll find the **Visitor Information Centre** and the **Shrewsbury Museum & Art Gallery**.

Lunch - Stay in the area for a light bite at one of the nearby cafés, such as the **Gallery Tearooms**, **Patisserie Valerie** or **Ginger & Co. Coffee**. Or if you're looking for something more substantial, try or **Carluccio's** or **Cote**.

Afternoon - After lunch head up the pedestrianised **Pride Hill** towards **Shrewsbury Castle and Regimental Museum**. Can you spot Charles Darwin on the way? Or head down **High Street** and **Wyle Cop**, littered with quirky, independent shops. Cross the **English Bridge** and visit Brother Cadfael's **Shrewsbury Abbey**. If you're still in need of refreshment try calling in at **The Peach Tree**.

Evening - You can grab an early evening cocktail or glass of wine in the trendy bars and cafés. We recommend **The Pour House**, before heading to a show at **Theatre Severn**. To round off your first day make your way to **Bellstone** to **The Loopy Shrew** which offers delicious home-cooked food or to the cocktail and champagne bar **Ten & Six** in **Mardol**.

Day 2

Morning - Head out of town towards the nearby **Ironbridge Gorge**, the National Trust's **Attingham Park**, English Heritage's **Wroxeter Roman City** or **Haughmond Abbey** and the various trails and walks.

Lunch - Unwind in one of our many edge-of-town coaching inns such as **The Haughmond** or the **Mytton and Mermaid Hotel**.

Afternoon - Head back into town and visit Shrewsbury's booming independent shopping scene, with many venues scooping awards in recent years. **Mardol**, **Wyle Cop**, **Bear Steps**, **Dogpole** and **The Parade** - a unique shopping centre - all offer something different.

Evening - Discover Shrewsbury's ghastly past by booking onto an evening ghost tour or visit our former jail, **The Dana**. Or take a cruise on **Sabrina Boat** (they offer a variety of themed events from wine tasting to summer BBQs). Then stop at **The Boathouse** or **The Lion and Pheasant** for fine food, great wines and maybe some live music.





A Visit Around an Event

Day 1

Morning - Come to one of our wonderful events such as the internationally renowned **Shrewsbury Flower Show** or the popular **Shrewsbury Food Festival**. You can spend an entire day at our events but don't be afraid to leave and have a look around the town as all allow free same day return.

Evening - Most events have nighttime entertainment, such as the firework display at the Flower Show which rivals anywhere else in the world. However if it's time for a change the local restaurants and bars will happily look after you.

Day 2

Morning - Explore some of our history by walking the trail of the many churches within the loop of the **River Severn**. Follow the footsteps of our medieval ancestors by exploring the shuts and passages of the town - don't forget to spot the quirky street names. Or have a browse round the **Pride Hill** and **Darwin Shopping Centres** on **Pride Hill**.

Lunch - **Camellias Tea Rooms** or **La Lanterna** are both excellent places to refuel ready for the afternoon's activities. Or head to the **Market Hall** for a bite to eat at the pop-up eateries and then enjoy a browse around the stalls.

Afternoon - Relax on a scenic river cruise and enjoy a unique perspective of the town. Take a walk through Percy Thrower's award-winning **Dingle Gardens** in the **Quarry Park** before heading back to the centre of town. You could walk along our medieval **Town Walls**, marvel at our Tudor timber-framed buildings and treat yourself to a cake in **Peaberry's**.

Evening - Fancy a taste of something different? There's **Casa Naranja**, an authentic tapas bar; the **House of the Rising Sun**, inspired by the food of the Pacific Rim or a tasty curry at **The Masala**. Then head to the **Old Market Hall** for a glass of wine and a film or try **The Wightman** theatre for a variety of live shows.



-01



-05



-02



-03



-06



01 Love 2 Stay

02 Oxon Hall Touring Park

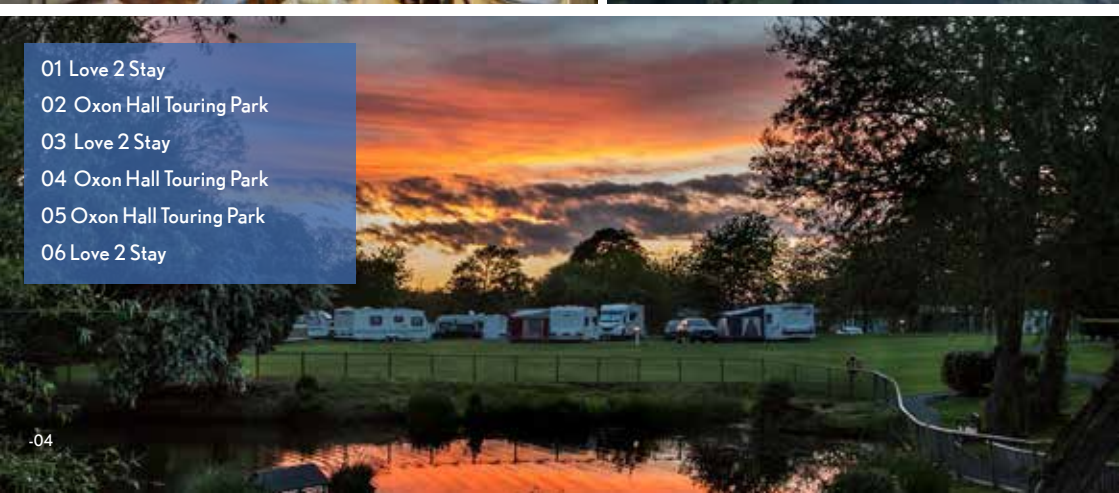
03 Love 2 Stay

04 Oxon Hall Touring Park

05 Oxon Hall Touring Park

06 Love 2 Stay

-04



STAY

The hotels of Shrewsbury and the surrounding area have some of the best and most unusual accommodation in the county. There are historic coaching inns, independent boutique hotels, traditional hotels, homely B&Bs and guest houses. If you prefer to do your own thing, self-catering cottages, caravan parks and campsites are also available.

HOTELS, INNS, GUEST HOUSES & B&BS

Hotels, inns, guest houses and B&Bs are awarded 1-5 stars.

Gold and Silver Awards from VisitBritain, Red Stars from the AA are awarded for excellence together with standards over and above the ratings already awarded.

SELF CATERING

Our diverse self-catering accommodation is awarded 1-5 stars by VisitBritain, the AA or Shropshire Tourism while some are also inspected by the Hoseasons Group and Sykes Cottages.

CARAVAN PARKS & CAMPSITES

Caravan parks and campsites are awarded 1-5 stars if inspected by VisitBritain, or 1-5 pennants if inspected by the AA.

HOW TO BOOK

You may either contact the accommodation provider directly, or call the Shrewsbury Visitor Information Centre on 01743 258888 for a little more advice. The team will be on hand to help you match your requirements to the most suitable establishment.



ACCOMMODATION SYMBOLS

Telephone	No Pets	TV in unit	Shower block
Children Welcome	Evening meals	Bed Linen Included	Entertainment
Baby Sitting	Tea/Coffee making facilities	Toilet Block	Microwave
En-suite available	No smoking	Refrigerator	Freezer
Licensed	Special Diets	Clothes washing facilities	Residents Lounge
Credit cards accepted	Parking on site	Electric hook-ups	Shop
Television in bedroom	Rail link under 2 miles	Chemical Disposal Point	Open fire/Woodburner
Ground floor rooms	Short Breaks	Gas/Electric included	Dishwasher
Pets welcome		Free WiFi	

Mobility level 1: Suitable for a person with sufficient mobility to climb a flight of steps.

Mobility level 2: Suitable for a person with restricted walking ability and may need to use a wheelchair occasionally.

Mobility level 3: Suitable for a person who depends on the use of a wheelchair and transfers unaided.

Mobility level 4: Suitable for a person who depends on the use of a wheelchair and can require assistance.



OXON HALL TOURING PARK SHREWSBURY



ENJOY THE BEST OF BOTH WORLDS...

Oxon Hall Touring Park boasts an attractive countryside setting yet is conveniently located close to Shrewsbury town centre.

www.morris-leisure.co.uk



MORRIS
LEISURE

ABBAY COURT HOUSE 134 Abbey Foregate, Shrewsbury, SY2 6AU

Welcome to Abbey Court House, a comfortable 10 bedroom guest house. Grade 2 listed and conveniently located a short walk from the town centre. On a frequent bus route.

Book now for a warm welcome!

- All rooms en-suite, free Wi-Fi.
- Free off-road parking on site.
- Rooms have tea & coffee, and TV.
- Great rates and tasty breakfasts.
- Good places to eat/shops nearby.
- Some ground floor rooms available.



01743 364416 | info@abbeycourt.biz | www.abbeycourt.biz



Rectory Farm — Church Stretton —

01694 751306 | www.rectoryfarmbandb.co.uk

Every effort is taken to ensure that the information in this publication is accurate at the time of going to print. All information contained in advertisements is provided by the advertisers. Shrewsbury Tourism recommends that visitors check with individual establishments before bookings or visits are made.

Published by Blueprint Travel Media Ltd. on behalf of Shrewsbury Tourism with assistance from Shrewsbury Town Council and Shropshire Council. Copyright 2019. All rights reserved. Shrewsbury Tourism is also supported by Andrews, Orme & Hinton.

Design & Production, Blueprint Travel Media Limited.
Sarah Edwards, Associate Publisher
Dan Steeden, Design Assistant

Blueprint Travel Media Ltd would like to thank all those who generously shared images for use within this guide.

Photography: Blueprint Travel Media/Tony Witts; Daniel Bosworth; Nigel Bowsher; Alan Cole; Lucy Cousins; Simon Cousins; Simon Dodds; Nathan Dumlao; Paul Elton Photography; Lorraine Fletcher; Bob Greaves Photography; Sarah Hart; Andy Hughes; Steve Jetley; John Kenyon Photography; Tim King; Steve Lacey; Love2Stay; Morris Leisure; Steve Oliver; Photopia Photography; Rawpixel; Katy Rink/*My Shrewsbury*; Daniel Renyard; Lee Roberts; Shrewsbury BID; Shrewsbury Flower Show; Shrewsbury Folk Festival; Shrewsbury Food Fest; Aimee Spinks; Tanners Wines; Ian Thwaites; Twenty First Century Media; Virtual Shropshire Drone Rangers; Jeremy Wilson.



Cake on Arrival

Hi I'm Sarah from Ferndell B&B, please give me a call on 01743 344949.



It would be lovely to meet you and do watch our fun video on the website.

www.ferndellshrewsbury.co.uk



Lower Hill Campsite

07966 491319
info@lowerhillcampsite.co.uk
www.lowerhillcampsite.co.uk

Lower Hill Farm
Hugley
Shrewsbury
Shropshire
SY5 6NX

College Hill Guest House

Nationally recommended

A TOWN CENTRE

16th CENTURY

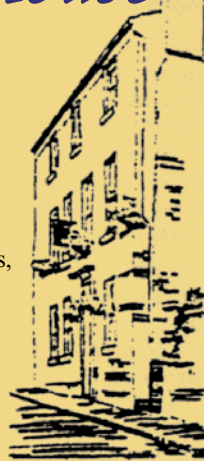
LISTED BUILDING

En-suite rooms available
with flat screen TV,
tea/coffee making facilities,
Free WiFi Access

11 College Hill,
Shrewsbury SY1 1LZ
Tel: 01743 365744

Maureen Buckley

collegehillguesthouse@yahoo.co.uk



★★★★ GUEST ACCOMMODATION



Abbots Mead Hotel



Hotel run by the owners,
all rooms en-suite, TV,
all usual facilities plus
free wireless internet, bar,
parking.

★★ METRO HOTEL



St Julian's Friars, Shrewsbury SY1 1XL
Tel: (01743) 235281 Fax: (01743) 369133
Email: res@abbotsmeadhotel.co.uk
Website: www.abbotsmeadhotel.co.uk



ORIGINAL SHREWSBURY

This publication is
produced by the
**Shrewsbury Tourism
Association.**

Key Member Benefits:

- Website listing
- Leaflet distribution at trade shows
- Marketing, PR & media support
- 10% off stand space at Shropshire Festivals

01743 369741
shrewsburytourism@gmail.com
www.originalshrewsbury.co.uk

Clairmont Guest House



Whether visiting Telford or Shrewsbury for work or leisure, Clairmont is the perfect place to stay, offering outstanding 4* accommodation within a beautiful Victorian property situated 3 minutes from Junction 7 of the M54 and 10 minutes' walk from local railway.

- Flat screen TV
- Freeview
- DVD player
- Hospitality tray
- Hairdryer
- Mini Fridge
- Wenlock Spring water
- Robe
- Luggage rack
- Extra blanket
- Set of Towels
- Complimentary toiletries by Crabtree and Evelyn
- Lockable safe
- Thermostatic heating
- Iron and ironing board
- Desk area

01952 414214
info@clairmontguesthouse.co.uk
www.clairmontguesthouse.co.uk

54, Haygate Road
Wellington
Telford
TF1 1QN



GO EXPLORE

originalshrewsbury.co.uk



ORIGINAL
SHREWSBURY

[illegible]

PRINCE RUPERT
HOTEL
★★★★★



"4 star luxury in the very heart of Shrewsbury"

Following a significant £1 million renovation programme and the addition of a 4th AA star, the first of its kind within the town centre, the Grade II Listed Prince Rupert is now firmly established as the finest hotel within the heart of Shrewsbury. Just a stone's throw away from all of Shrewsbury's best attractions, the hotel is located within the town's most fashionable and cosmopolitan area on Butcher Row.



Family owned & managed since 1996

70 bedrooms including 12th & 15th Century historic suites
2 superb restaurants, Camellias Tea rooms & an Award-winning Executive Head Chef
Valet parking to our private town centre car park

Butcher Row, Shrewsbury, SY1 1UQ | Tel: 01743 499 955
reservations@princeruprterhotel.co.uk | www.princeruprterhotel.co.uk

